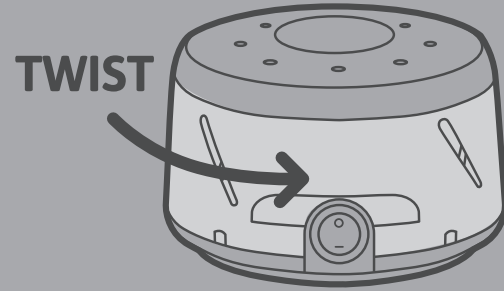


Twist TO FIND YOUR ONE AND ONLY *shushhh!*



join our community?



facebook.com/SeriousSleep pinterest.com/SeriousSleep twitter.com/SeriousSleep

MARPAC.COM

We are proud
OF OUR MACHINES AND PROUD TO STAND BEHIND
OUR USA PRODUCED PRODUCTS.

If you need service (even beyond the warranty period outlined below), PLEASE DO contact us!

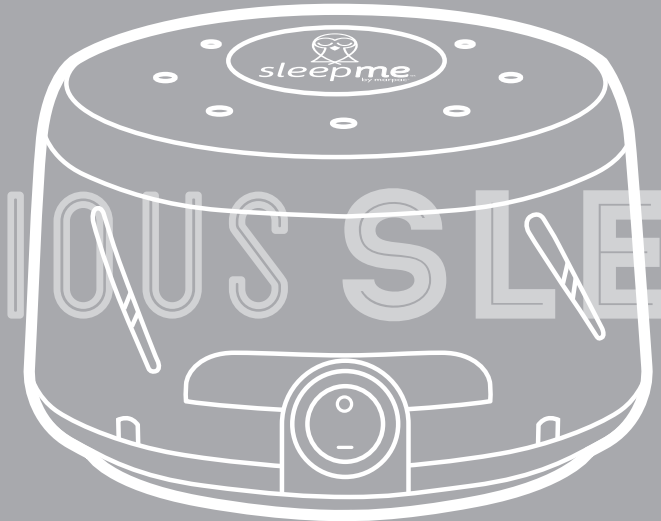
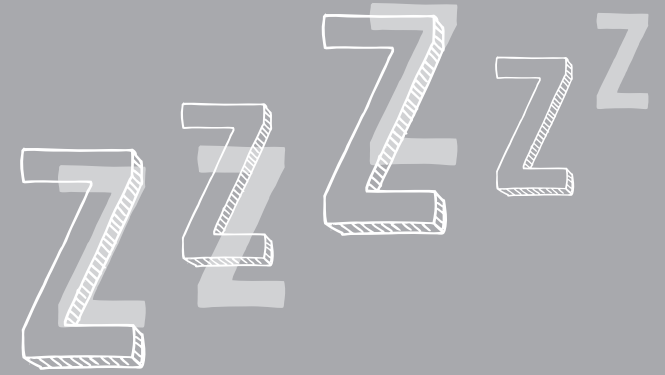
Website: www.marpac.com

Email: info@marpac.com

Phone 910-602-1421.

A live, knowledgeable service team member will be happy to assist you during our regular business hours.

LIMITED ONE-YEAR FACTORY WARRANTY (Did you know that our products often last for decades? Impressive, isn't it?) Marpac warrants this product to the original purchaser to be free of defects for a period of one year from the date of purchase. The limited warranty covers all parts and/or workmanship against defects or breakage in normal intended use. The warranty does not cover any damage caused by accidental dropping, rough handling or misuse of the product; including tampering; or the application of electrical power other than that given on the serial number label. Altering or tampering with the serial number will also void this warranty. This warranty gives you specific legal rights; and you may also have other rights, which vary from state to state.

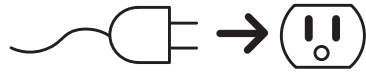


SERIOUS SLEEP®

YOU'LL *Love* HOW YOU SLEEP!

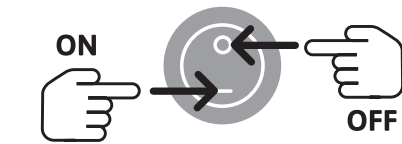
USING YOUR SOUND CONDITIONER

1 PLUG IT IN



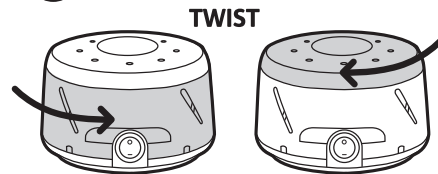
- **Your Dohm** masks unwanted, uncontrollable, disturbing noises that interfere with your ability to sleep, relax, or concentrate.

2 TURN IT ON



- **Your Dohm** creates a restful, pleasing atmosphere in situations where extreme quiet makes the slightest noise disturbing

3 ADJUST YOUR SOUND



- **Your Dohm** provides a sound barrier in situations where confidentiality or privacy is desired
- Daily or nightly use of approximately one week should be sufficient to get used to **Your Dohm** sound conditioner

The cap openings on your Dohm can be adjusted to expose between three to eight holes, and the openings in the collar have a wide and a narrow end. By rotating the cap and collar of your Dohm to allow different amounts of air to rush through these openings in different ways, your Dohm can create a variety of soothing tones and volumes.

Your Dohm should be positioned away from you, so that the sound it generates is able to fill the room and give you the greatest benefit.



← *Not too close* →

Your Dohm can help Babies sleep through the night too!

IMPORTANT SAFETY INSTRUCTIONS: PLEASE READ!

Your new sound conditioner is equipped with a “polarized” line cord plug. A polarized plug is similar to a regular “lamp cord” type of plug, except one of the blades is larger than the other. The large or wider blade represents the ground side of the line cord, which ensures correct electrical polarity. This feature allows the plug to be inserted into an electrical receptacle outlet in only one direction (the wide blade will usually be to the left as you face the outlet). If the plug doesn’t fit the receptacle in one direction, rotate the plug and try it in the opposite position. Some homes are not equipped with polarized electrical receptacles. While not required, we do recommend use of a surge protector if your electricity is prone to fluctuations in current.

If the supply cord is damaged, it must be replaced by the manufacturer, its service agent or similarly qualified persons in order to avoid a hazard.

WARNING: To reduce the risk of fire or electric shock, do not use this product with any solid-state speed control device (i.e. dimmer switch, motor controller, variable speed control).

IMPORTANT INFORMATION FOR CORD-CONNECTED APPLIANCES

A polarized plug will not fit into a non-polarized receptacle, so it’s necessary to have a qualified electrician install a polarized electrical receptacle. Do not operate this sound conditioner if it has a damaged cord or plug. Discard the product or return to an authorized service facility for examination and/or repair. Do not run the machine’s cord under carpeting. Do not cover the cord with throw rugs, runners, or similar coverings. Do not route the cord under furniture or appliances. Arrange your machine so that its cord is away from traffic areas, and where it will not be tripped over.

CAUTION! The holes at the base of your Dohm serve as an air exhaust. Blocking these holes or restricting airflow around the product in any way can cause severe overheating, which could seriously damage your sound conditioner and the area surrounding it.

This appliance can be used by children aged from 8 years and above, and persons with reduced physical, sensory or mental capabilities or lack of experience and knowledge, if they have been given supervision or instruction concerning use of the appliance in a safe way and understand the hazards involved. Children shall not play with the appliance. No user maintenance required.

We sincerely hope that this additional product information will help you get the best use and performance from your new sound conditioner. Visit marpac.com for additional information, and please don't hesitate to contact us if you have any questions!